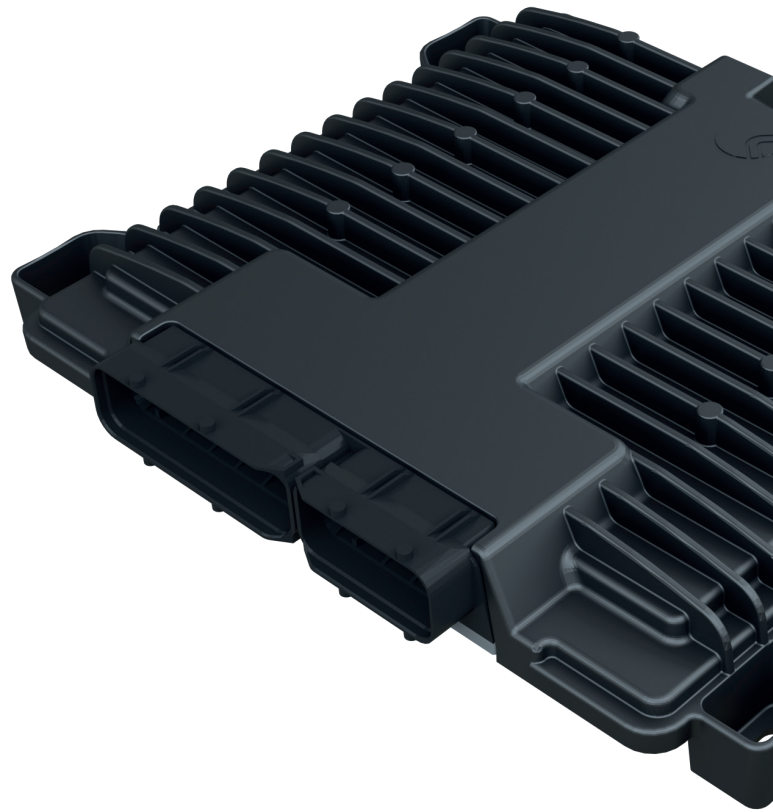


Carraro Electronic Control Unit TEQ2



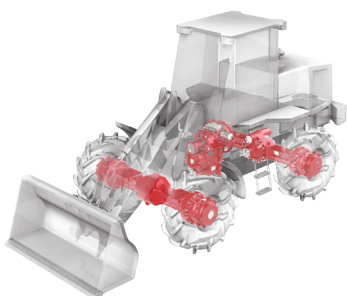
Specifications

Developed to ensure Functional Safety Compliance (ISO25119, ISO13849). Designed to optimize the overall System performance by governing the mechanical, hydraulic, and electronic modules together. The software is extremely versatile, as its parameters can be fully configured and customized to suit each application.

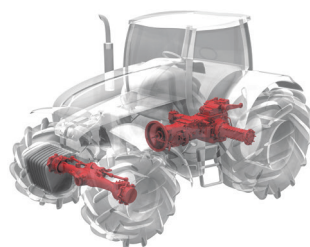
Advantages

- › High I/O (121) and CPU capacities to allow for customization
- › Automatic code generation from model based design approach
- › Capable of supporting various CAN protocols, including XCP, SAE J1939, KWP2000 and UDS
- › Suitable to be integrated in the customer service tool or Carraro service tool supported

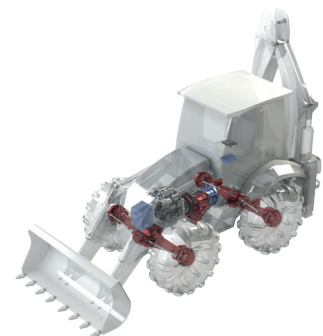
Applications



Construction Equipment



Agriculture



Hybrid Powertrain

Electronic Control Unit

TEQ2

INTERFACE

Nominal supply voltage	12 - 24 Vdc
Analog inputs	Up to 20 (voltage/current/resistance, software configurable inputs)
Digital inputs	Up to 54 (pull-up/pull-down, software configurable inputs)
Frequency inputs	Up to 8 (pull-up software configurable / magneto-resistive sensors support)
PWM outputs	Up to 8 (High side / High side + Low side)
Digital outputs	Up to 26 (High side / Low side)
Output supply	5 Vdc - 8 Vdc
Communication	1 RS232 asincronous, 2 CAN bus compliant with CAN 2.0b specifications (SAE J1939 / ISO 11783 / ISO 11898 / ISO 14229)

GENERAL

Operating temperature	-40/+85 °C
Protection rating	IP67
Electrical connections	121 pins board mounted
Housing material	Aluminium
Dimensions [for reference only]	285 x 50 x 230 mm
Weight [for reference only]	2.1 Kg

Block diagram

